

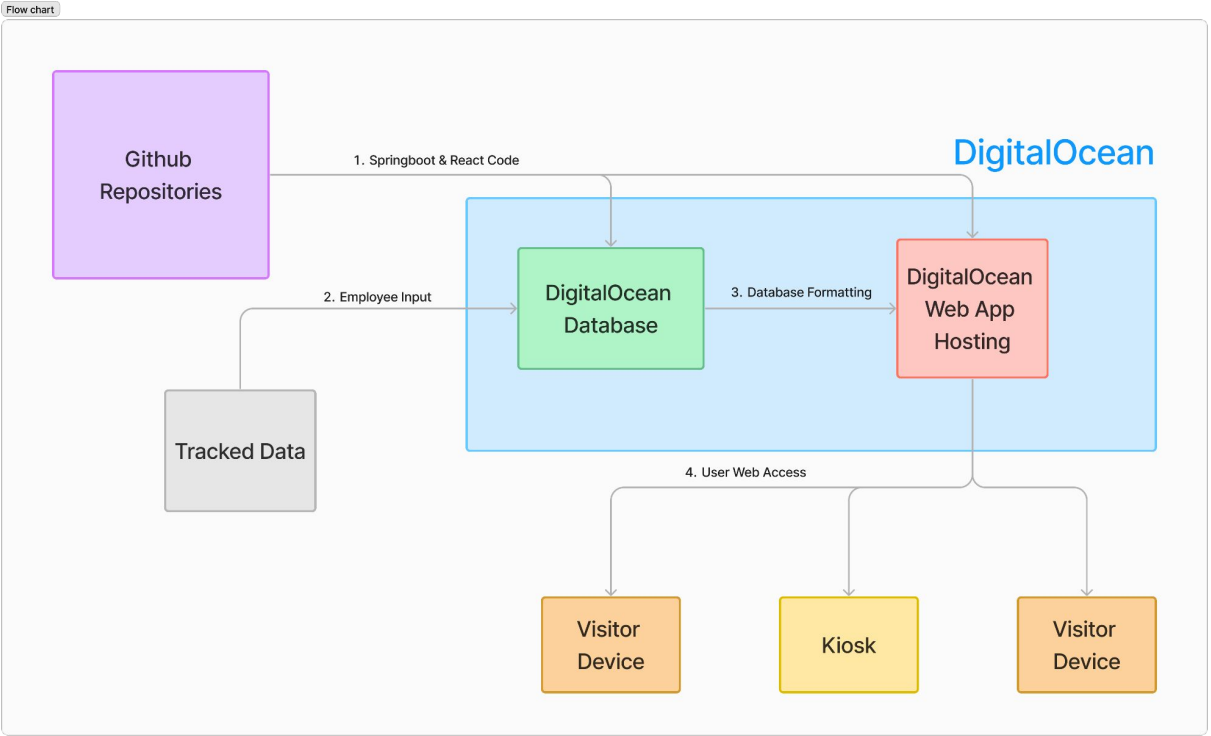


# Lightning Talk 5

FLUTR - TEAM 11

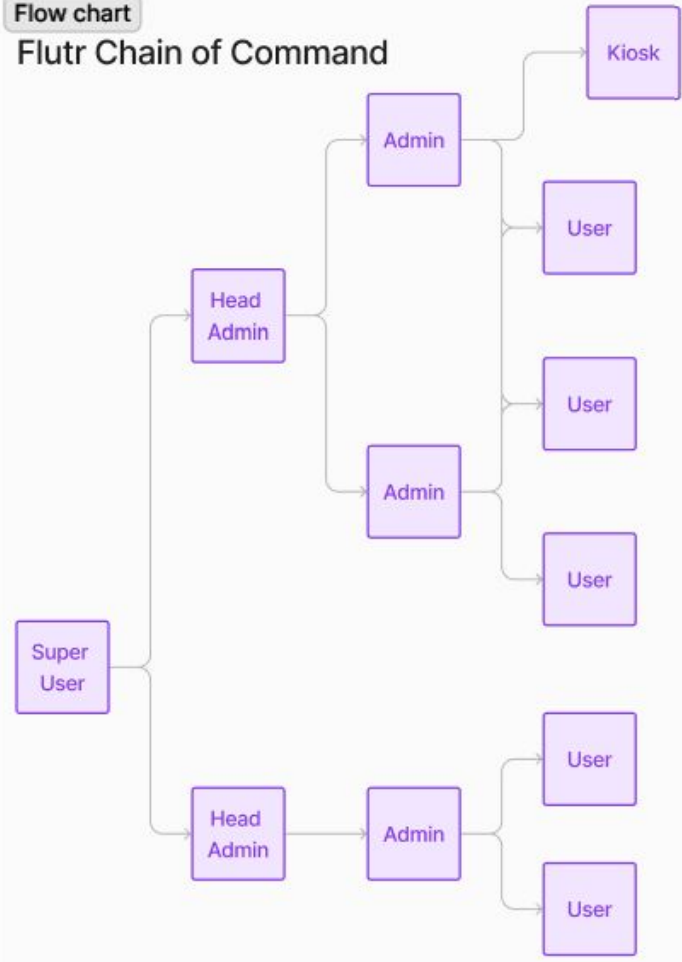


# DETAILED DESIGN & VISUALS



Flow chart

### Flutr Chain of Command



# FUNCTIONALITY

As this project has 2 main users, the functionality for each user is different.

## Employee

For the employees, the main functionality will be tracking the shipments and butterflies released into the flight house. To do so, they will be marking each butterfly they are released into the system, using an easy tracking UI. This will then be transported to the database where all past data will be held.

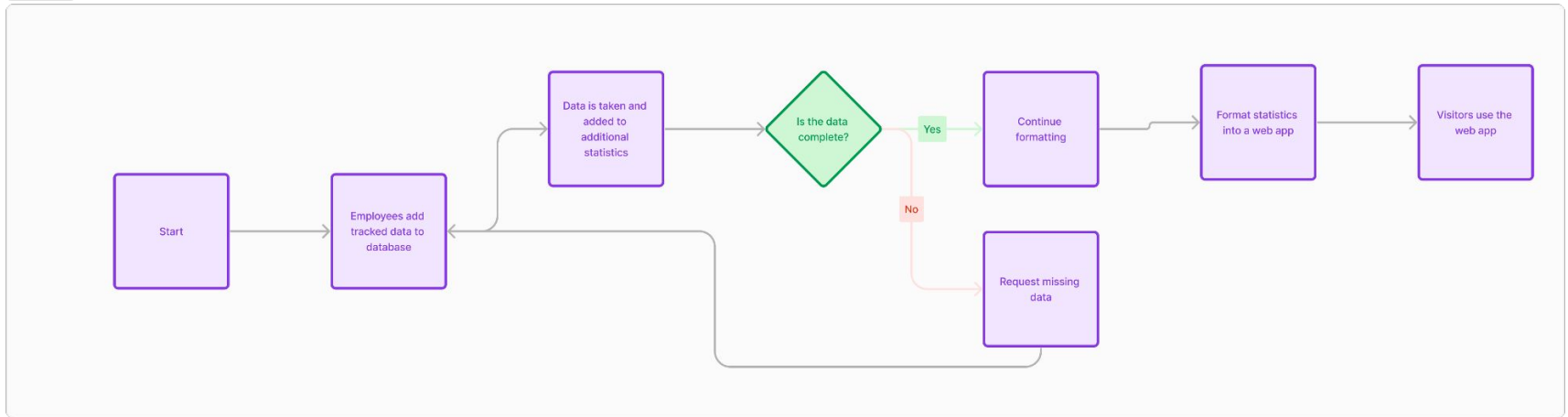
## Visitors

For visitors, they will be using an interactive web app in order to learn more about the flight house and the butterflies inside. For this, we will take the employee tracked data, as well as additional facts in order to create an easy-to-use web app. Visitors will both be able to use their phones as well as the in person kiosk at Reiman Gardens.

# FUNCTIONALITY

Shown below is a flowchart of how the data will be taken and given to the user

Flow chart



# TECHNOLOGY CONSIDERATIONS

- Nathan wants us to “Make it cool” and use cutting edge technology, but technology that isn’t so cutting edge that it isn’t proven.
- Mainly using React for frontend
  - Open Source / Backed by Meta
  - Proven / Been around a while but still “Cutting edge”
  - Easily add new modules like “Chakra UI”
- SpringBoot Backend
  - Works with the hosting we want to use
  - Everyone has at least some experience with it
- MongoDB Backend
  - Spring compatible
  - Our Hosting Solution Compatible
  - Backend Lead has experience.

# AREAS OF CONCERN & DEVELOPMENT

- **User Needs:** Our current design was drafted with input from our client and first-hand experience of the shipment/release logging process at Reiman Gardens in mind.
- **Primary Concerns:**
  - Ensuring easy adoption and feature utilization by other flight houses without on-site assistance.
  - Developing a comprehensive user manual for all levels of user groups at the flight houses.
  - Identifying testing strategies to ensure smooth rollout with minimal bugs.
  - Developing solutions to prevent overheating and insect-related damage in the flight house operating environment to ensure long-lasting and efficient kiosk hardware.

# CONCLUSIONS

- Using technologies that have a large amount of resources to draw from, and which we all have expertise in, like SpringBoot and React, ensures our application is innovative, reliable, and versatile.
- Prioritizing the creation of comprehensive documentation is important to ensure easy adoption by flight houses around the world.
- Creating an engaging and efficient user experience that serves both employees and visitors for interaction, aiming for user and client satisfaction.
- Researching components and solutions for the challenging environment of the flight house to ensure long-term functionality of the kiosk.